

FLAT 15

# THORBURN HOUSE

LONDON SW1



LOVELY AND BRIGHT RECENTLY REFURBISHED APARTMENT LOCATED ON THE FOURTH FLOOR WITH FANTASTIC LIGHT AND VIEWS OF SURROUNDING BELGRAVIA. THIS PROPERTY BENEFITS FROM A HIGH SPECIFICATION REFURBISHMENT THAT INCLUDES POLIFORM KITCHEN, WARDROBES AND FURNITURE, UNDERFLOOR HEATING, SECODARY GLAZING ON ALL WINDOWS, AND MIELE APPLIANCES.

2 Bedrooms · 2 Bathrooms · Reception Room · Kitchen · Beautifully Refurbished · Lift Access & porter

Thorburn House is located in the heart of Belgravia with close access to all international amenities Knightsbridge and Belgravia have to offer.

Tenure: Leasehold plus share of freehold

Asking price: £3,500,000

Annual service charge: £8,485

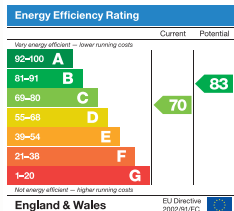
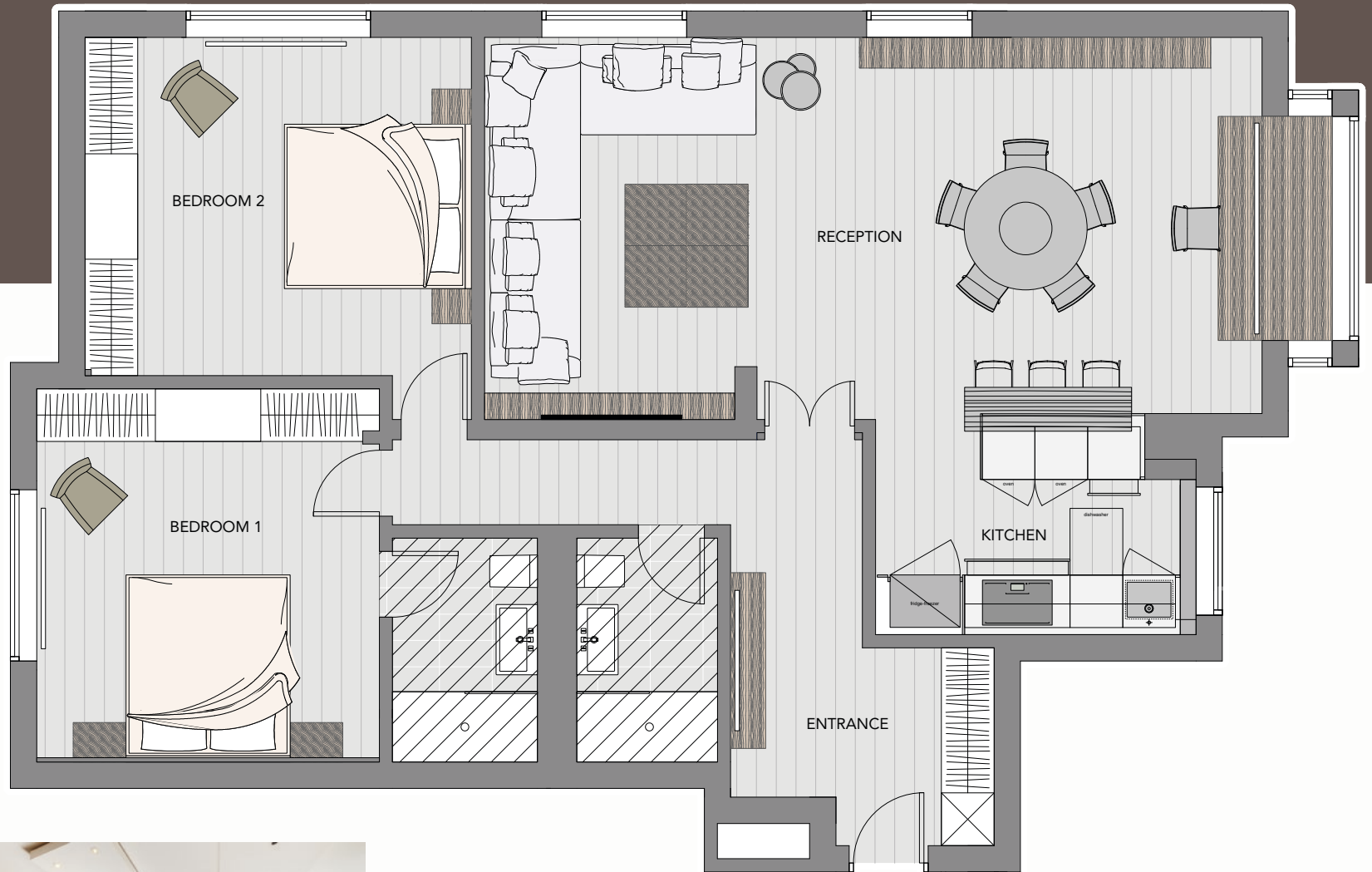








Approximate Gross  
Internal Area:  
1,189 sq ft / 110.46 sq m



NB: We wish to advise prospective purchasers that these sales particulars are believed to be correct, but their accuracy is in no way guaranteed, nor do they form part of any contract. We have not carried out a detailed survey nor tested the services, appliances or specific fittings. Measurements are approximate. March 2017. CGP15347-FS02S. Photography & Brochure by CGP.CO 020 7222 7222

**H. BARNES & CO**  
 PROPERTY INTELLIGENCE  
 020 7499 3434  
 WWW.HBARNES.LONDON